

The Approach, Implementation and Business of the CCC Diversion Improvement Project

Corey Engen

FlyWater, inc.
www.flywater.com

October 10, 2012



This presentation hopes to offer useful information by telling the story of a project through a practitioner's eyes.

Goal

History

Process

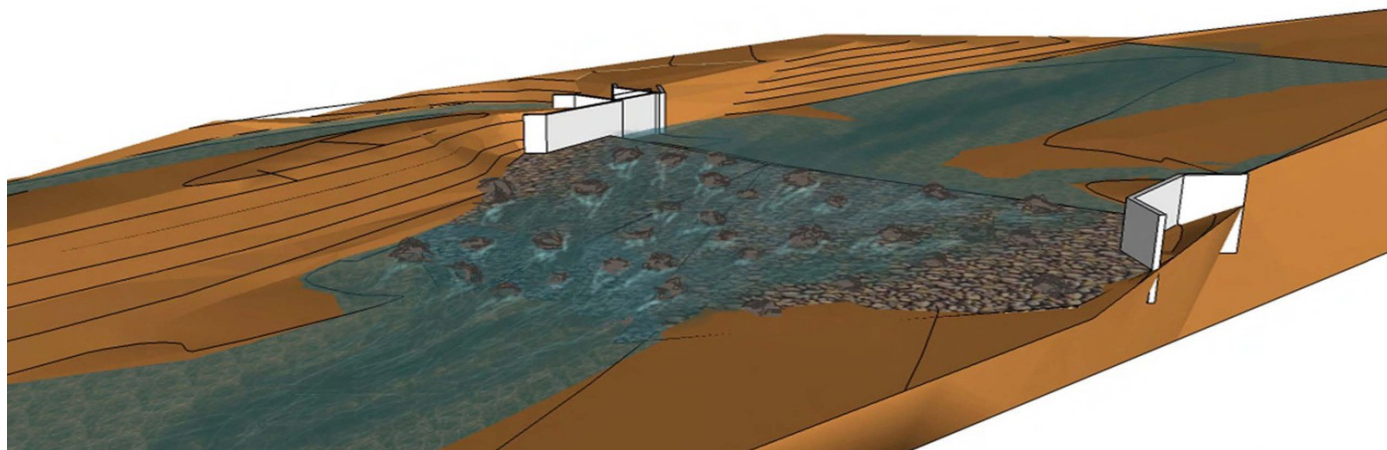
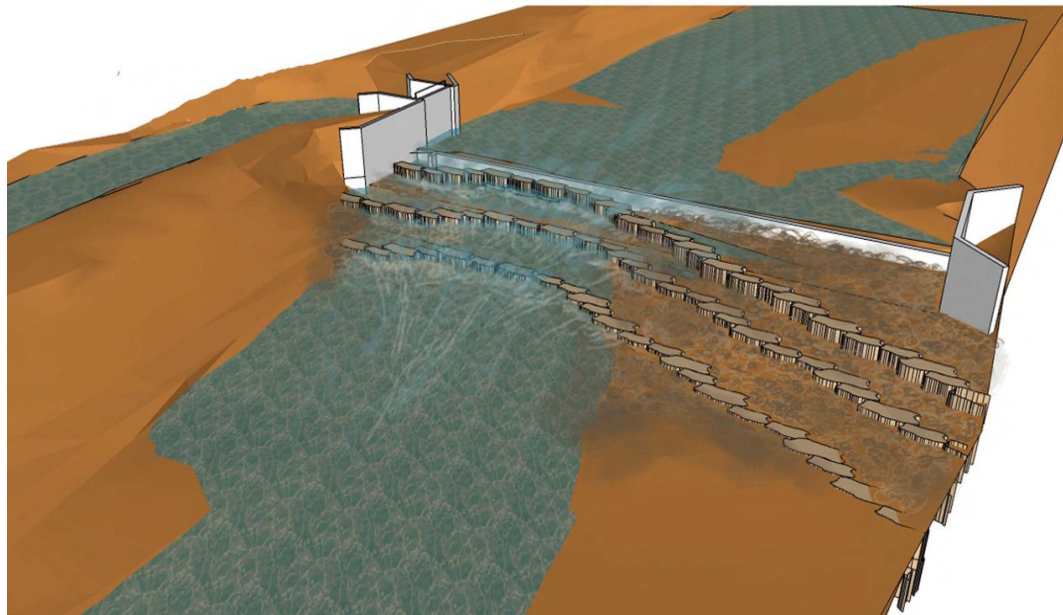
Future



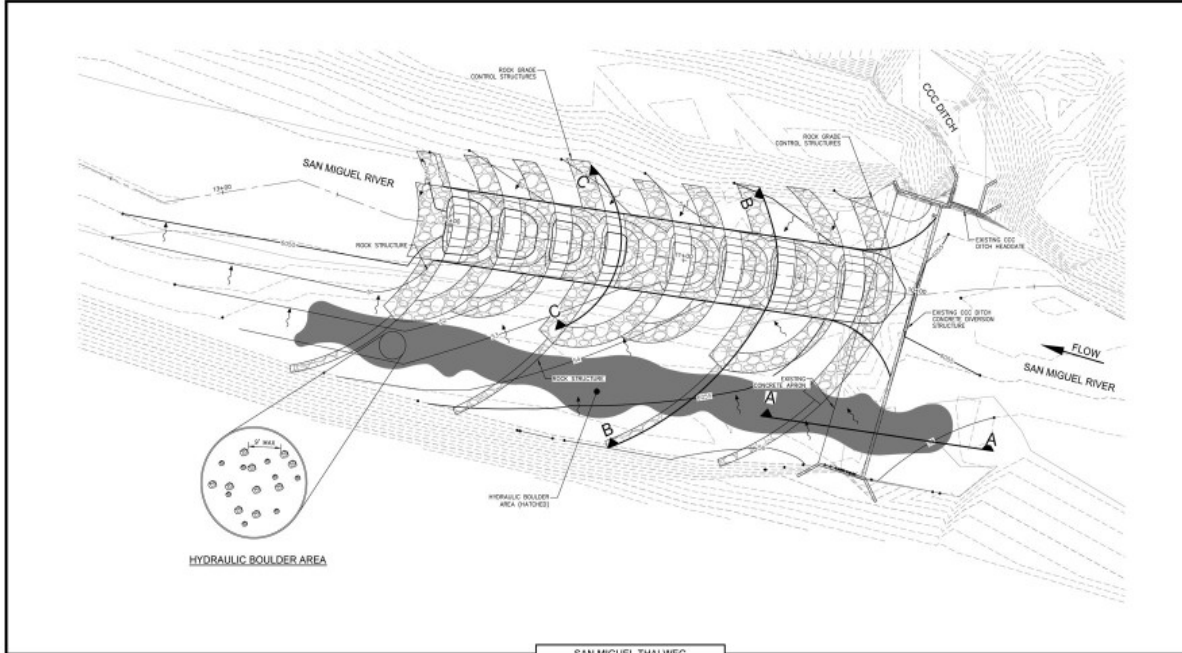
Goal – Improve a five foot high, 115 foot wide, reinforced, concrete diversion dam effectively supporting a community and stopping fish.



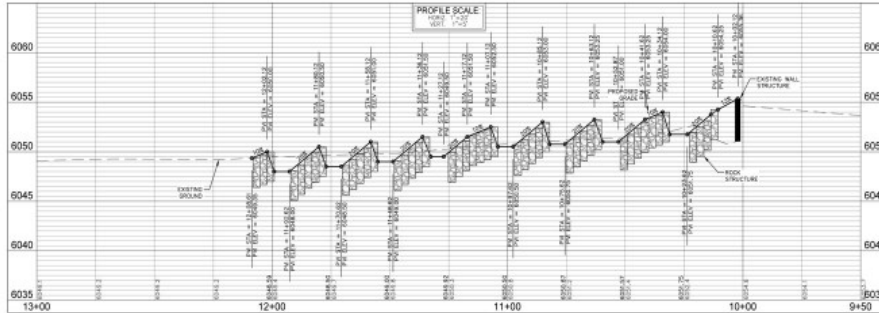
History – It has been said that Good Luck is the product of planning and opportunity.



Process – If all you have is a hammer, everything looks like a nail.



SAN MIGUEL THALWEG



GRAPHIC SCALE:



LEGEND:



NOTES:

1. ALL CUT AND FILL DELINEATION IS APPROXIMATE AND SHALL NOT BE USED FOR CONSTRUCTION.
2. ROCK GRADE CONTROL STRUCTURE SHALL CONSIST OF TWO TO THREE FOOT NOMINAL DIAMETER BOULDERS PLACED IN ARCHES AS SHOWN ON THIS PLAN. A MINIMUM OF 0.75 FEET OF EACH BOULDER SHALL BE PLACED WITHIN THE ENGINEERED FILL.

DRAWING FILENAME: F:\337-006\Draw\337-006_060.dwg LAYOUT NAME: 0 DATE: Mar 15, 2011 - 4:33pm CAD OPERATOR: mdy
LIST OF AREAS: [F:\water-10] [237-006_dshd] [237-006_060.dwg] [237-006_060.dwg]

DESIGN/BUILD
PLAN SET
03/15/11



BENNETT RIVER
RANCH
MONTROSE COUNTY, COLORADO
COLORADO WATER
TRUST

CCC DIVERSION FISH PASSAGE IMPROVEMENT
PROJECT
GRADING & SAN MIGUEL RIVER
THALWEG PROFILE



Date: March 15, 2011
Job No: 337-006
Drawn: mdy
Checked: mdy
Scale: 1" = 20'-0"
Sheet: 4 of 8

Future – Monitor Form and Function along with Providing Good Business Solutions if Action is Needed



In summary, all river projects need people to value, promote and accomplish them. And, people need each other to succeed.



Flexible Forward Thinking
Goal Orientated Solutions
Funding **OPTIONS**
Project Delivery Method
Implementation Process
MONITORING
Performance Measures
Client Satisfaction